



# Carolina RUSH

TSXV: RUSH | OTCQB: PUSCF

Exploring for **Gold** and **Copper** in the **Southeast USA**

Corporate Presentation – December 2024

Cover Photo: Reclaimed Brewer Open Pit/Heap Leach Mine Site, South Carolina, USA



# DISCLAIMER

This Presentation is not an offer to buy or sell the securities referenced herein, nor has the Securities and Exchange Commission or any state, provincial or territorial regulatory authority determined if this Presentation is truthful or complete. Any representation to the contrary is a criminal offense.

The securities described herein have not been and will not be registered under the United States Securities Act of 1933, as amended (the “U.S. Securities Act”), or the applicable securities laws of any state of the United States and may be offered and sold in the United States only in reliance upon an exemption from the registration requirements of the U.S. Securities Act and in accordance with any applicable securities laws of any state of the United States.

Each prospective investor must rely on his or her own examination of **Carolina Rush (“RUSH”)** and the terms of the offering, including the merits and risks involved in making an investment decision with respect to the securities. The Company makes no representation or warranty, express or implied, and assume no responsibility for the accuracy, reliability or completeness of the information contained in this Presentation.

## **Forward – Looking Statements**

This Presentation includes “forward looking statements”, within the meaning of applicable securities legislation, which are based on the opinions and estimates of management and are subject to a variety of risks and uncertainties and other factors that could cause actual events or results to differ materially from those projected in the forward-looking statements. Forward-looking statements are often, but not always, identified by the use of words such as “seek”, “anticipate”, “budget”, “plan”, “continue”, “estimate”, “expect”, “forecast”, “may”, “will”, “project”, “predict”, “potential”, “targeting”, “intend”, “could”, “might”, “should”, “believe” and similar words suggesting future outcomes or statements regarding an outlook. Such risks and uncertainties include, but are not limited to, risks associated with the mining industry (including operational risks in exploration development and production; delays or changes in plans with respect to exploration or development projects or capital expenditures; the uncertainties involved in the discovery and delineation of mineral deposits, resources or reserves; the uncertainty of resource and reserve estimates and the ability to economically exploit resources and reserves; the uncertainty of estimates and projections in relation to production, costs and expenses; the uncertainty surrounding the ability of RUSH to obtain all permits, consents or authorizations required for its operations and activities; and health and safety and environmental risks), the risk of commodity price and foreign exchange rate fluctuations, the ability of RUSH to fund the capital and operating expenses necessary to achieve the business objectives of RUSH, the uncertainty associated with commercial negotiations and negotiating with foreign governments and risks associated with international business activities, as well as those risks described in public disclosure documents filed by RUSH. Due to the risks, uncertainties and assumptions inherent in forward-looking statements, prospective investors in securities of RUSH should not place undue reliance on these forward-looking statements.

Readers are cautioned that the foregoing lists of risks, uncertainties and other factors are not exhaustive. The forward-looking statements contained in this Presentation are made as of the date hereof and the RUSH undertakes no obligation to update publicly or revise any forward-looking statements contained in this Presentation or in any other documents filed with Canadian securities regulatory authorities, whether as a result of new information, future events or otherwise, except in accordance with applicable securities laws. The forward-looking statements contained in this Presentation are expressly qualified by this cautionary statement.

## **Historical Results**

This Presentation contains past mineral exploration results. RUSH has not yet completed the work necessary to verify those past exploration results and the results should not be relied upon. In addition, this Presentation contains information with respect to adjacent mineral properties obtained through public ally available documents. Such information has not been independently verified by RUSH and is not necessarily indicative of the mineralization on RUSH’s projects.

The technical and scientific information in this Presentation has been reviewed and approved by Patrick Quigley, MSc, CPG-12116, a Qualified Person as defined by NI 43-101 of the Canadian Securities Administrations.

# CURRENT PROJECTS

With Additional Target Development for Exploration & Discovery in the Region



## 1 BREWER MINE: Epithermal Gold-Copper & Porphyry Target

- Historic open pit gold mine: produced +200,000 oz Au
- Epithermal gold resource target:
  - pit floor - ready to drill
  - expanded target from IP survey
- Big company porphyry copper-gold target: Venture discussions in progress

## 2 SAWYER & NEW SAWYER: Two historic Gold Mines

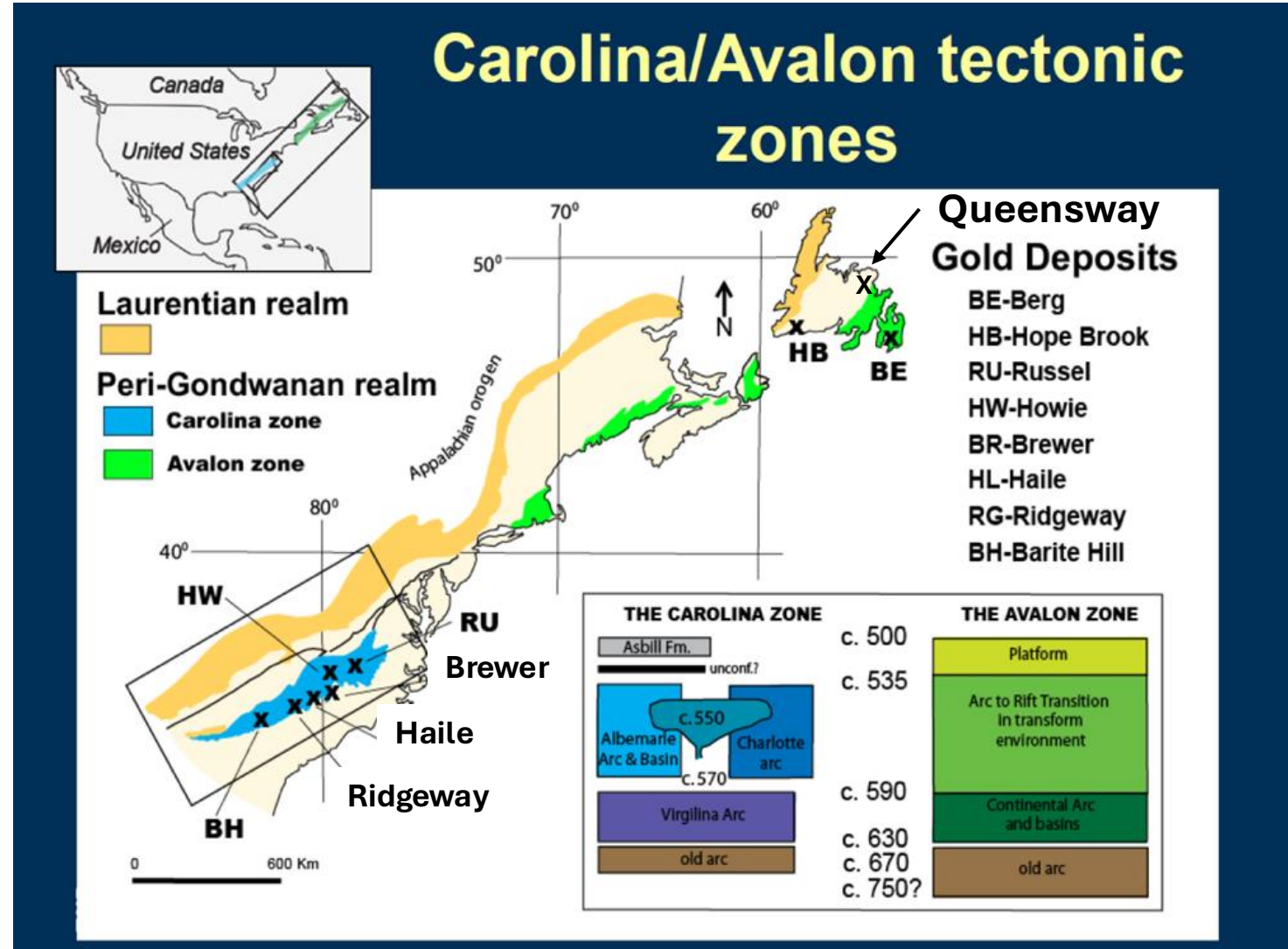
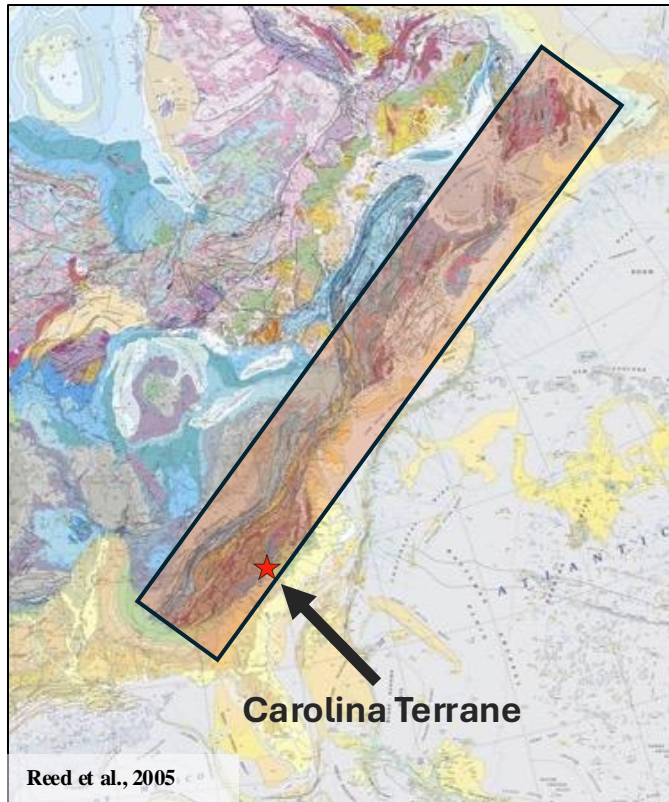
- Sawyer Trend gold properties: +20 km structural gold trend
- Sawyer Mine: historic gold resource - validate and expand gold resource
- New Sawyer Mine: immediate gold resource potential

# SOUTHEAST USA: NORTH AMERICA'S FIRST GOLD DISTRICT

Carolina Terrane: 10.35 M oz Gold Endowment

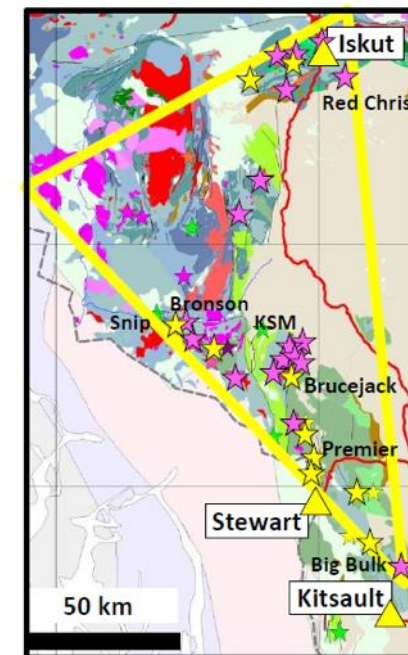
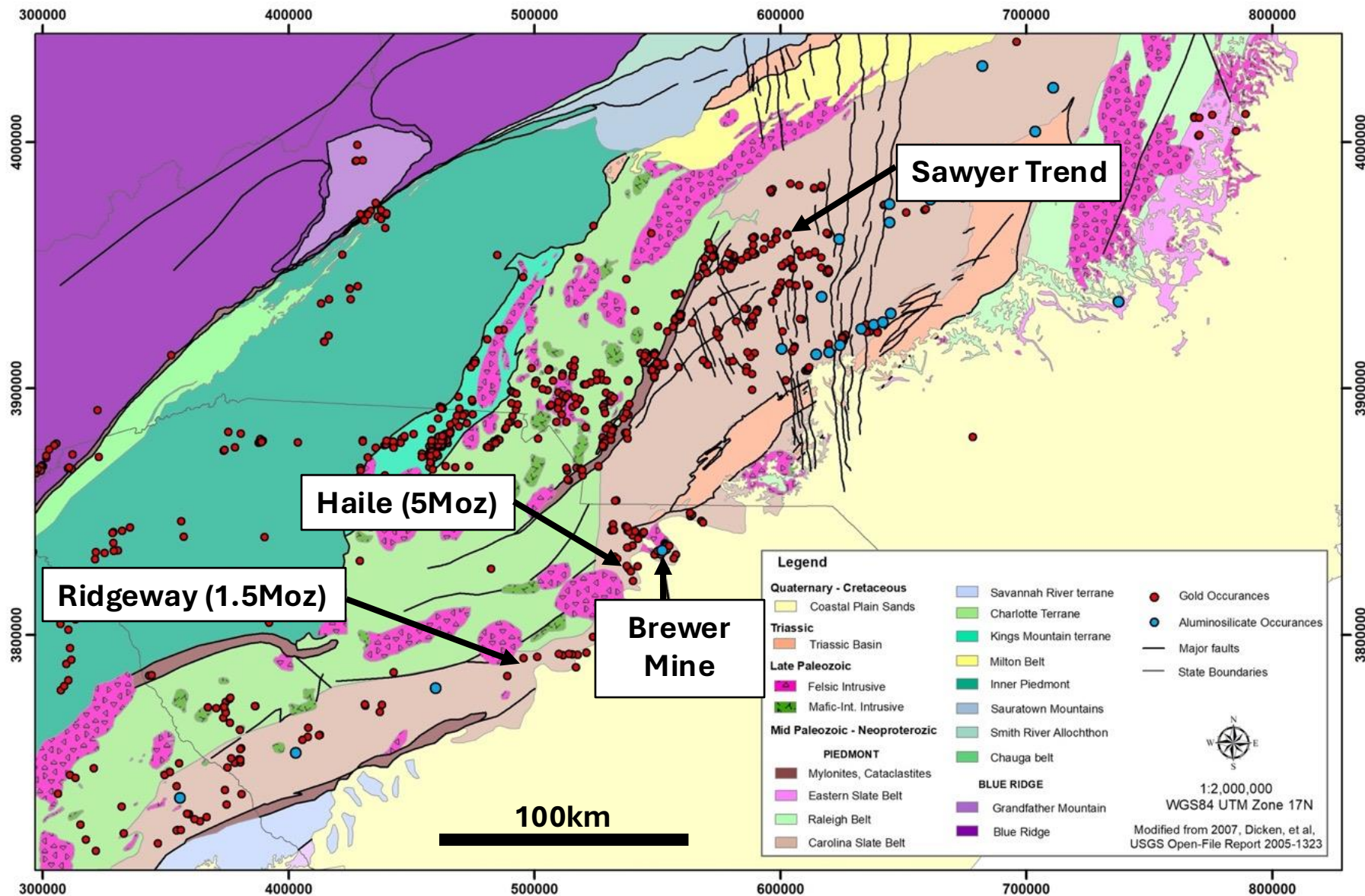
- Major metallogenic province
- Porphyry/epithermal and orogenic gold mineralization
- Gold discovered 50 years before California
- 1,493 mines and prospects documented

GEOLOGICAL SETTING OF EASTERN NORTH AMERICA





# CAROLINA RUSH HOLDS 3 HISTORIC GOLD MINES



# BREWER MINE, NEXT TO HAILE MINE

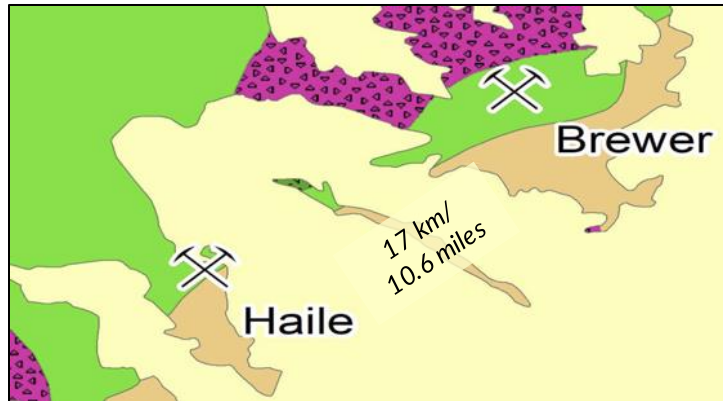
Table 1. Brewer Mine Production : 1987 – 1993

Location	Ore Tonnes	Waste Tonnes	Total Tonnes	Grade (g/t)	Au Oz (calc)
Brewer	4,487,441	4,500,617	8,869,699	1.20	173,150
B6	556,929	1,578,809	2,135,738	1.27	22,717
NW Trend	92,268	330,039	433,843	1.06	3,153
<b>TOTALS</b>	<b>5,136,638</b>	<b>6,737,146</b>	<b>11,873,784</b>	<b>1.20</b>	<b>199,021</b>

\* Source: Modified from Zwaschka and Scheetz, 1995

Deposit	Type	Host Rocks	Alteration	Historic*/Current Resource (Moz Au)	Au Age (Ma)
Haile	Sediment-hosted epithermal	Persimmon Fork metasediments	Quartz-pyrite-sericite	4.20	549
Ridgeway	Sediment-hosted epithermal	Persimmon Fork metasediments	Quartz-pyrite-sericite	1.44	553
Brewer	High sulfidation epithermal	Persimmon Fork metavolcanics	Quartz-pyrite-aluminosilicate	See Table 1*	550

\* Haile Gold Mine (OceanaGold), located 17 km from Brewer Mine; expected 130,000 to 150,000 ounces of gold per year – produced 176,000 ounces in 2022 (www.oceanagold.com)





# BREWER EXPLORATION TO DATE

## Key Objectives and Achievements

### #1: EVALUATE POTENTIAL OF BACKFILL MATERIAL

- 6 Sonic holes completed (350 m) through backfilled pit
- 488 large samples collected from pit backfill material

### #2: EXTEND GOLD-COPPER MINERALIZATION BELOW FORMER MINE

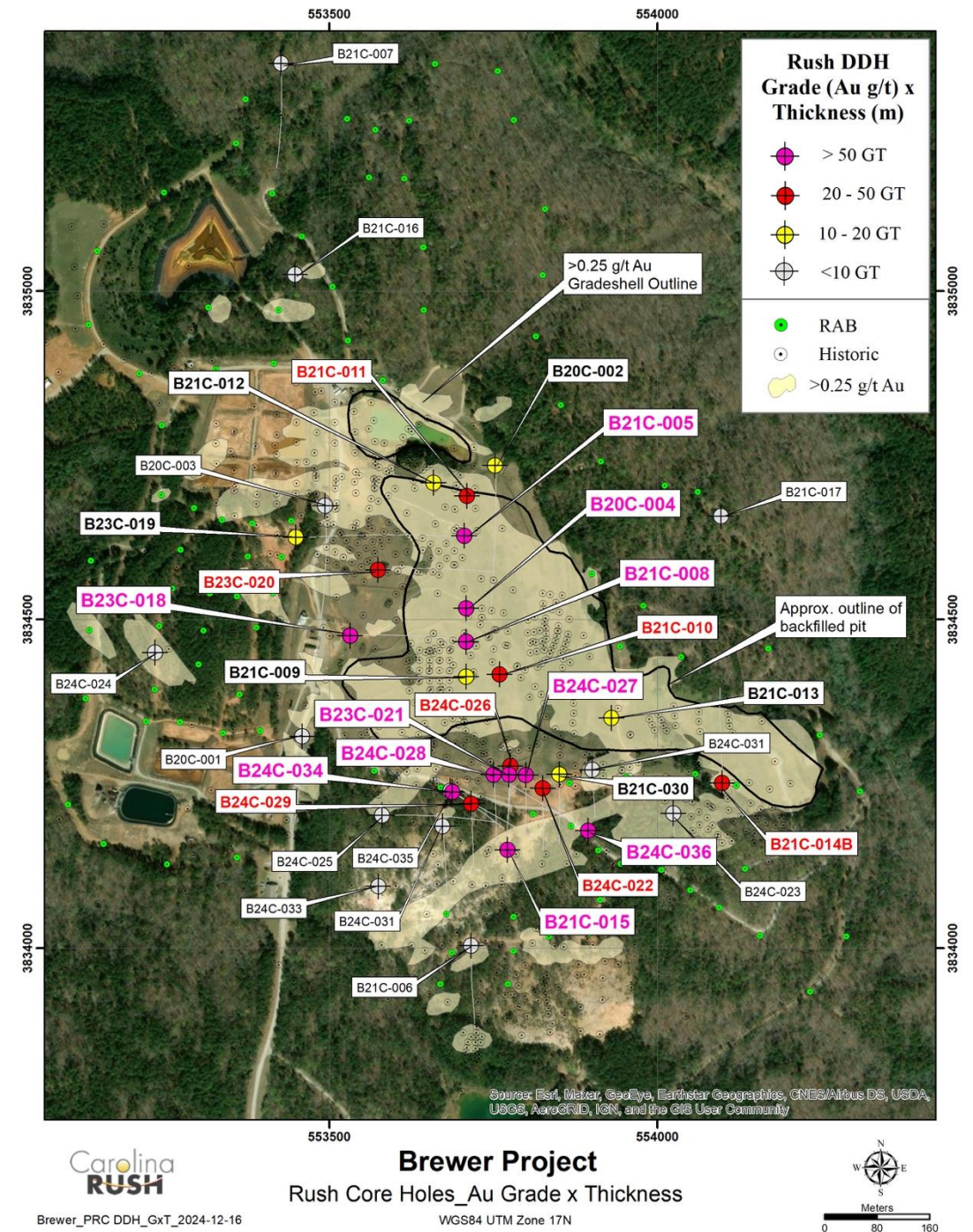
- B21C-005: 181.6m @ 1.24 g/t Au, 0.27% Cu from 56m depth  
Including: 10.1m @ 8.20 g/t Au, 0.24% Cu from 65m depth
- B21C-008: 106.5m @ 1.07 g/t Au, 0.26% Cu from 52m depth  
Including: 45.2m @ 2.03 g/t Au, 0.52% Cu from 104m depth

### #3: DISCOVERY THROUGH EXPLORATION

- Tanyard Breccia discovered in 2021, follow up drilling in 2023 yielded highest gold grades ever reported at Brewer:
  - B23C-021: 62.5m @ 8.5 g/t Au, 0.3% Cu from 111.5m depth  
Including: 2.5m @ 169 g/t Au from 170.5m depth

### #4: DEMONSTRATE POTENTIAL OF THE BREWER SYSTEM

- Modern exploration of a historic gold mine: data-driven, systematic approach
- Exploration model has identified important vectors into a potential porphyry copper system

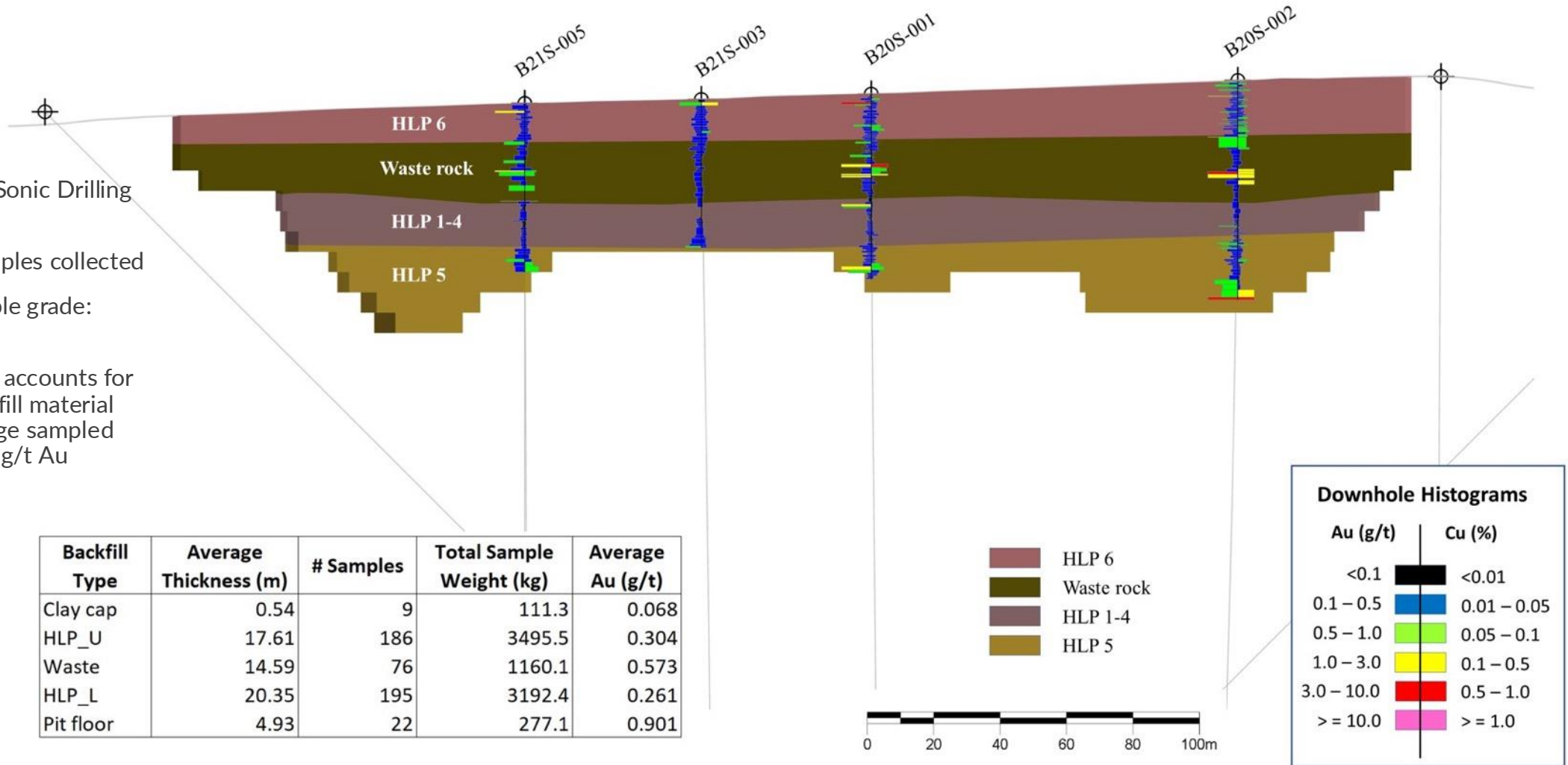


# RECLAIMED PITS: ~ 12 Mt OF BACKFILL MATERIAL

Reclaimed Backfill Material (vertical section, looking west)

Results of 6-hole Sonic Drilling Program:

- 488 large samples collected
- Average sample grade: 0.36 g/t Au
- “Waste Rock” accounts for ~44% of backfill material with an average sampled grade of 0.57 g/t Au



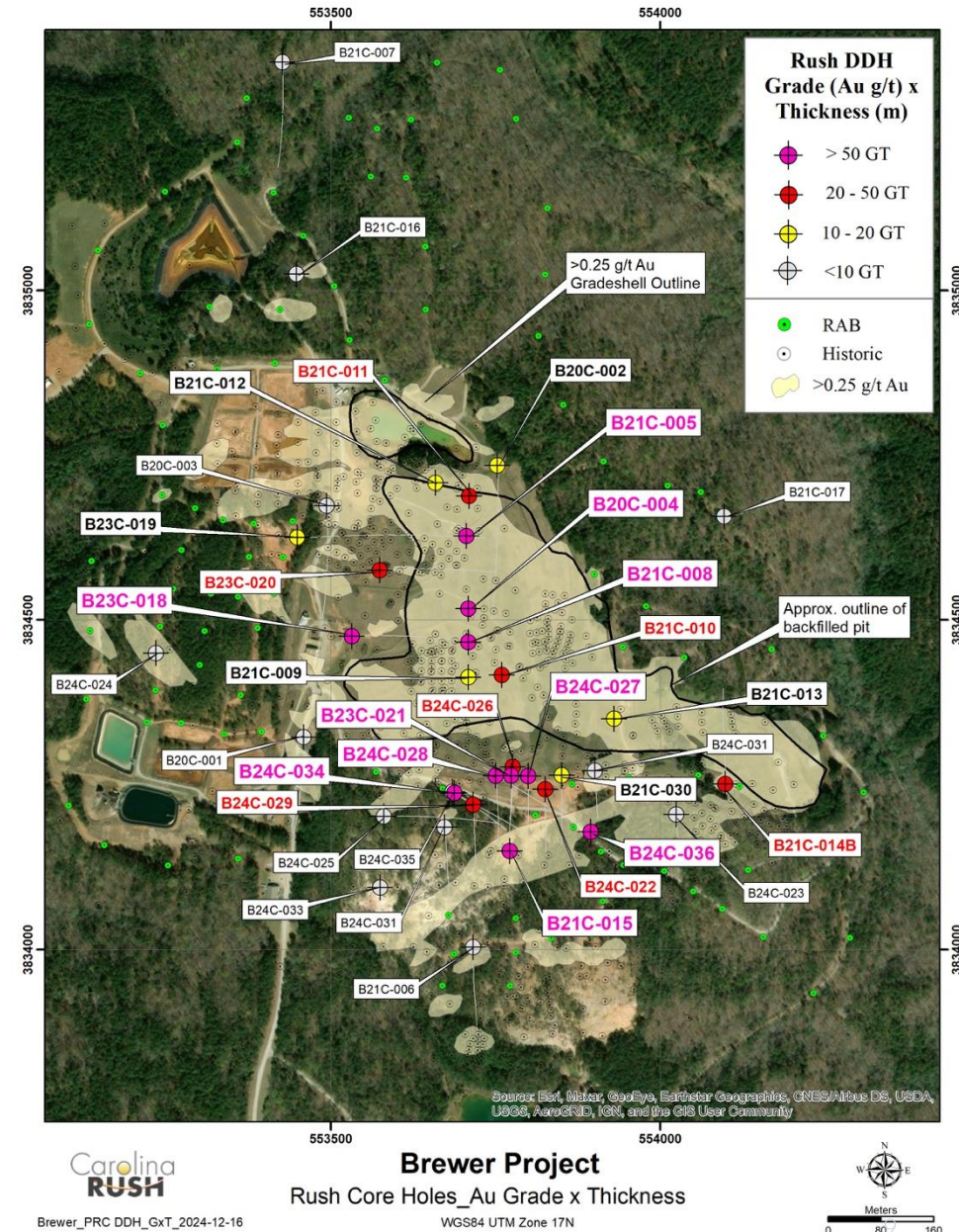
\* The Company cautions that a Qualified Person has not done sufficient work to classify the Historic Estimate as current mineral resources or mineral reserves under NI 43-101. The Company is not treating the Historical Estimate as current mineral resources or mineral reserves. There can be no certainty, following further evaluation and/or exploration work, that the Historic Estimate can be upgraded or verified as mineral resources or mineral reserves in accordance with NI 43-101. However, the Company plans to conduct further evaluation and/or exploration work with the objective of verifying or upgrading the Historic Estimate as mineral resources or mineral reserves in accordance with NI 43-101.



# SUMMARY OF BEST INTERSECTIONS AT BREWER

RANK	Drill Hole	From (m)	To (m)	Interval (m)	Au (g/t)	Cu (%)	Au GxT
1	B23C-021	111.50	174.00	62.50	8.45	0.28	528
2	B21C-005	56.00	237.60	181.60	1.24	0.27	225
3	B24C-036	63.20	269.50	206.30	0.66	<0.1	136
4	B21C-008	52.00	158.50	106.50	1.07	0.26	114
5	B20C-004	66.41	182.00	115.59	0.91	0.17	105
6	B23C-018	166.50	241.00	74.50	1.10	0.12	82
7	B21C-015	44.60	107.00	62.40	1.03	0.15	64
8	B24C-027	91.00	143.50	52.50	1.00	0.14	53
9	B24C-028	106.50	156.50	50.00	1.01	0.1	51
10	B24C-022	49.00	106.50	56.00	0.70	0.11	39
11	B24C-026	133.00	182.92	49.92	0.73	<0.1	36
12	B23C-020	163.50	229.45	65.95	0.50	<0.10	33
13	B21C-010	81.95	93.85	11.90	2.22	0.07	26
14	B21C-009	154.55	170.50	15.95	1.09	0.22	17
15	B20C-002	116.10	141.90	25.80	0.53	<0.1	14

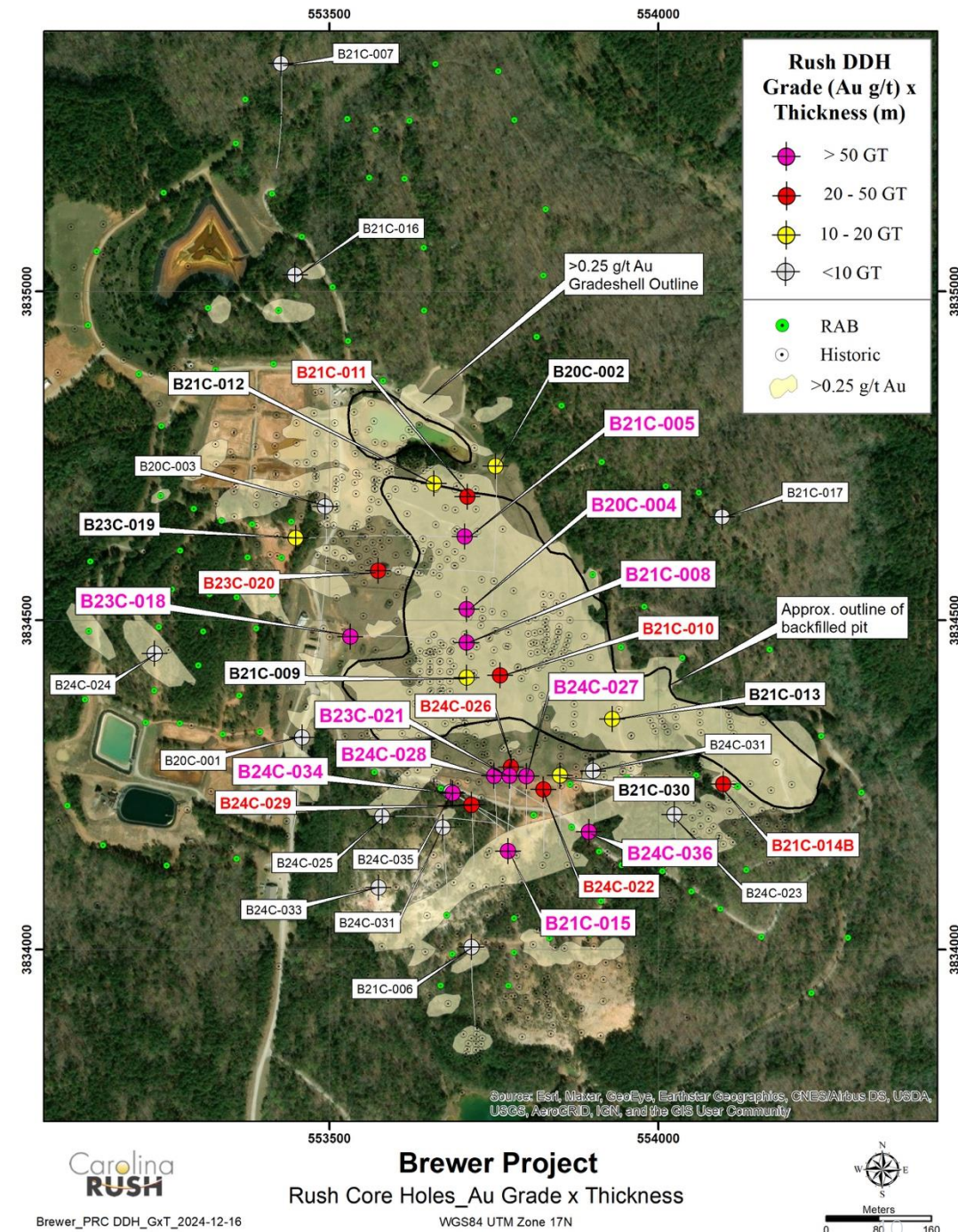
Notes: \*Reported intervals are drilled widths and do not represent true thicknesses. Holes ranked in terms of best GxT value (GxT = Au grade x thickness). Table shows reported intersections with a GxT value > 10 and an average grade >0.5 g/t Au, with new results highlighted in yellow.





# Higher Grades within Broad Mineralized Zones

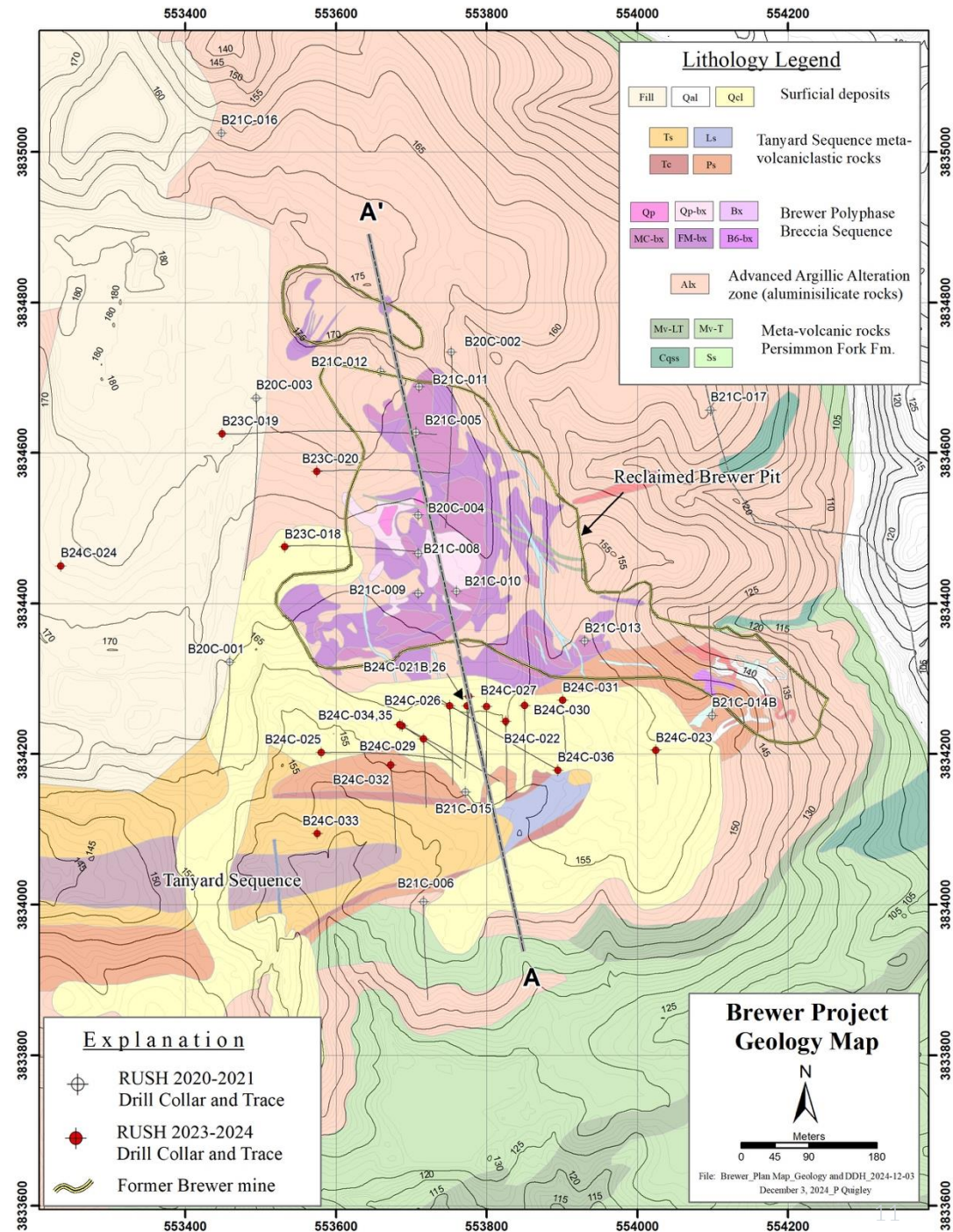
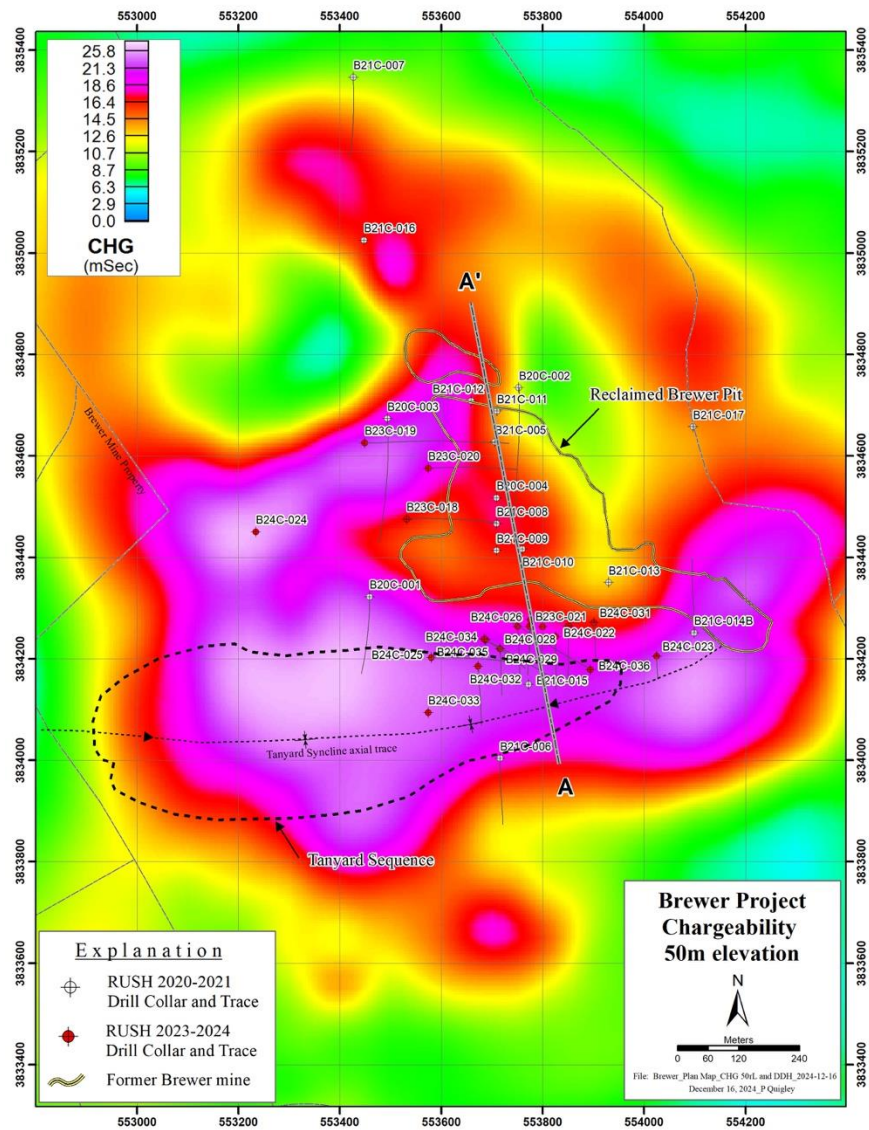
Drill Hole	From (m)	To (m)	Interval (m)	Au (g/t)	Cu (%)
B20C-004	66.41	182.00	115.59	0.91	0.17
Incl.	150.50	166.00	15.50	2.35	0.46
Incl.	162.55	166.00	3.45	5.29	1.19
B21C-005	56.00	237.60	181.60	1.24	0.27
Incl.	62.00	137.00	75.00	2.13	0.26
Incl.	64.90	75.00	10.10	8.20	0.24
B21C-008	52.00	158.50	106.50	1.07	0.26
Incl.	104.00	149.23	45.23	2.03	0.52
Incl.	141.00	149.23	8.23	5.04	1.43
B21C-015	44.60	107.00	62.40	1.03	0.15
Incl.	76.50	97.70	21.20	2.23	0.36
Incl.	87.00	90.00	3.00	5.17	0.39
B23C-018	166.50	241.00	74.50	1.10	0.17
Incl.	172.00	175.50	5.50	5.77	0.12
And	203.09	216.54	13.45	1.70	0.68
B23C-021	111.50	174.00	62.50	8.45	0.28
Incl.	132.70	149.00	16.30	2.83	1.00
Incl.	170.50	173.00	2.50	168.72	<0.1
B24C-027	91.00	143.50	52.50	1.00	0.14
Incl.	121.53	140.50	18.97	1.93	0.35
Incl.	124.85	130.12	5.27	2.50	0.95
B24C-034	106.20	167.20	61.00	1.65	0.28
Incl.	121.70	167.20	45.50	2.06	0.35
Incl.	145.65	151.00	5.35	6.92	1.20





# DIATREME BRECCIA COMPLEX

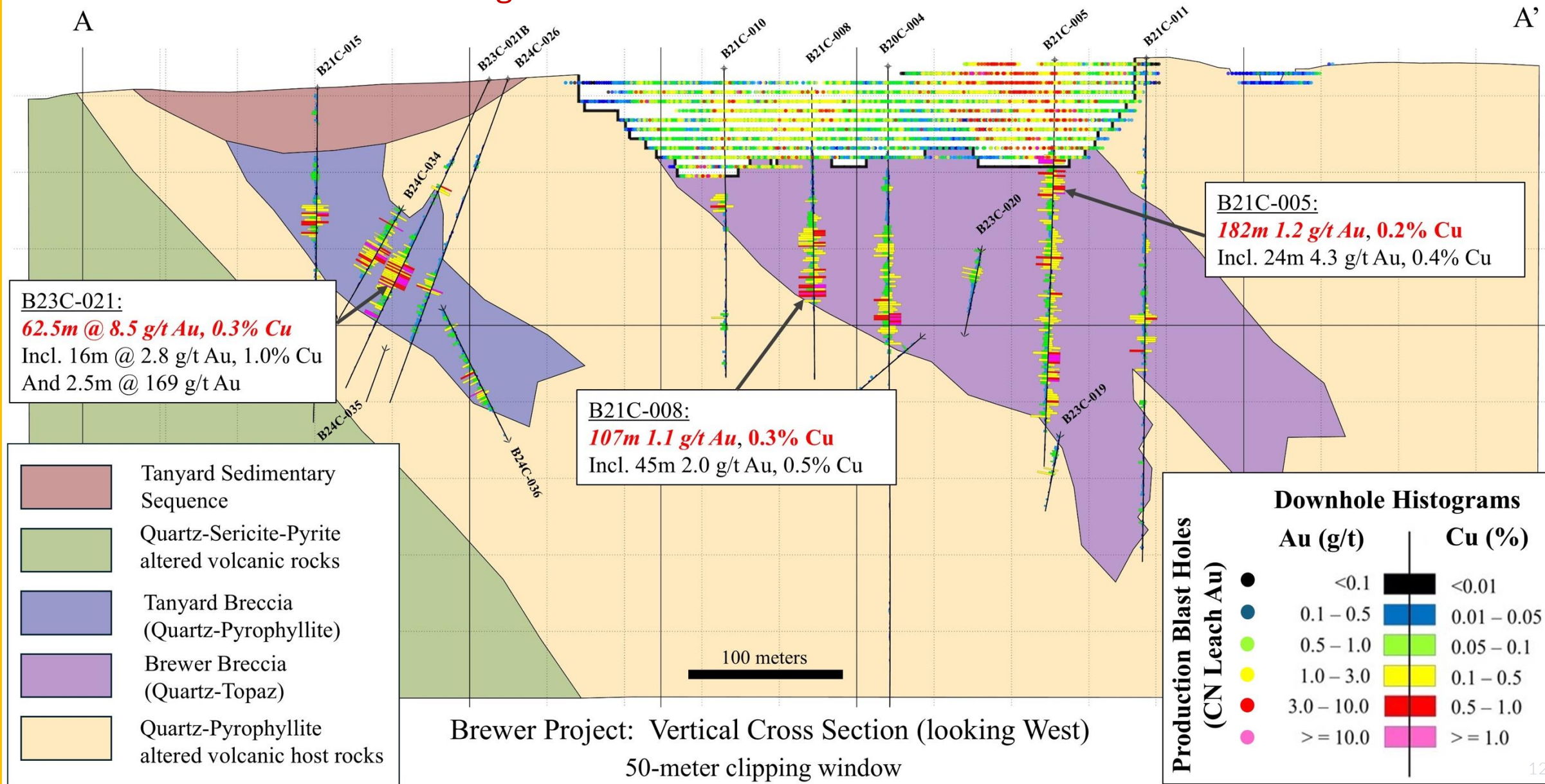
Historic exploration efforts only scratched the surface





# BRECCIA HOSTED GOLD-COPPER DEPOSIT

## Vertical Cross Section – Looking West





# LITHOLOGY, MINERALIZATION & ALTERATION

## Breccia and Mineralization

B21C-005: 165.4 m



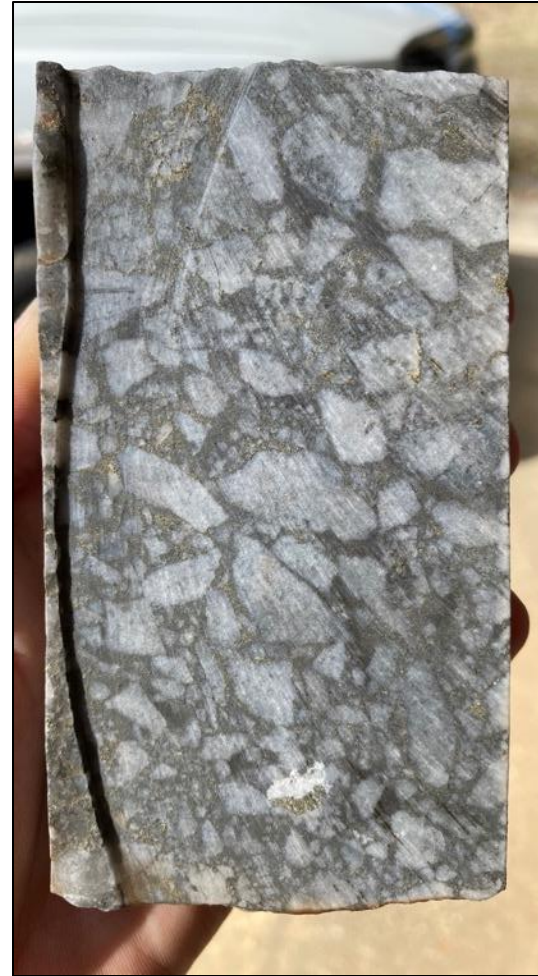
Multiple episodes of brecciation and veining, complex paragenesis

B21C-008: 120.3 m



Sub-rounded, polyphase, clast-supported, sulfide clasts and matrix: note covellite in center

B21C-008: 104.5 m



Angular, monolithic, matrix-supported

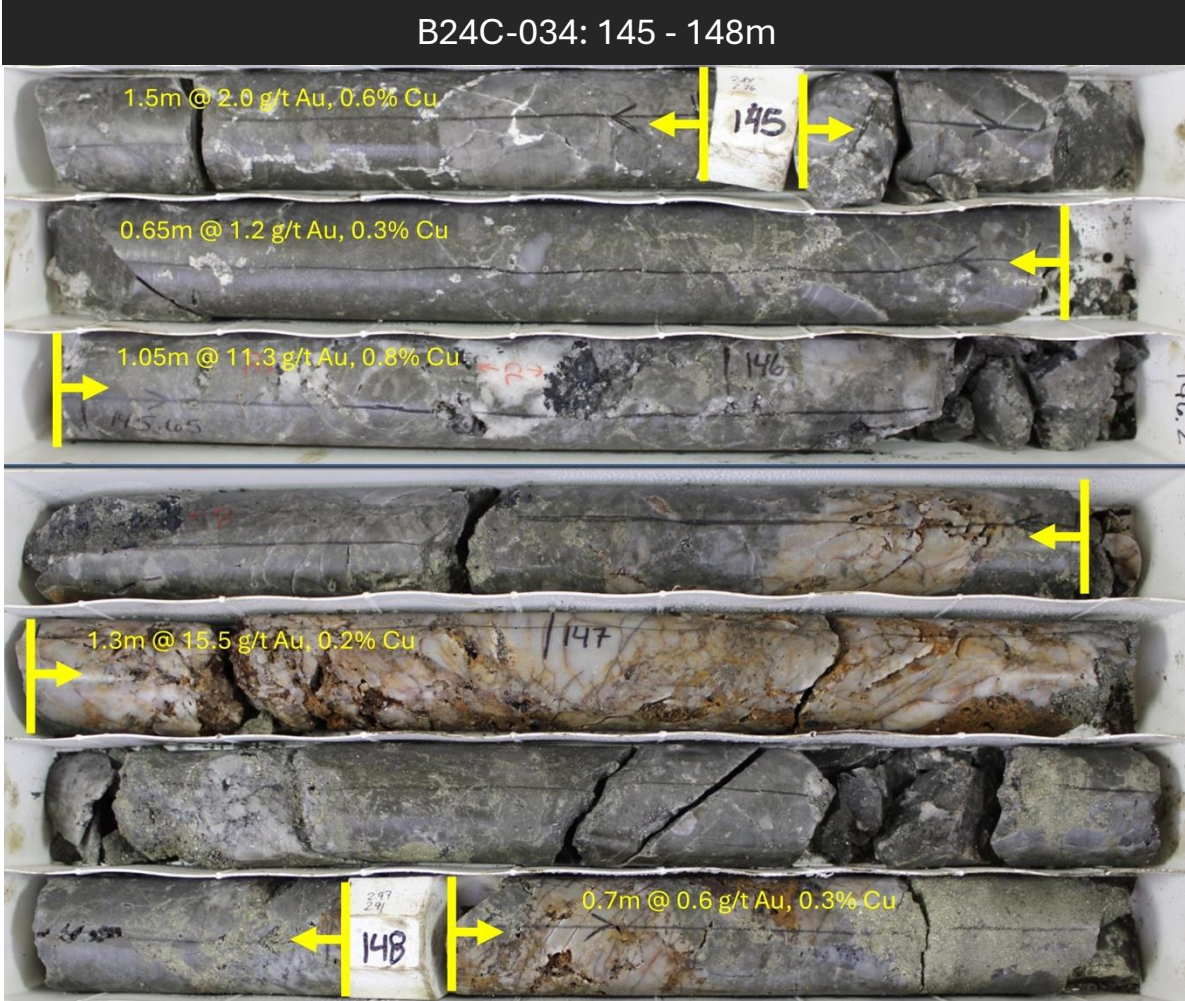
B21C-008: 67.6 m



Large, mineralized quartz-porphyry clast within breccia



# TANYARD ZONE PHOTOS

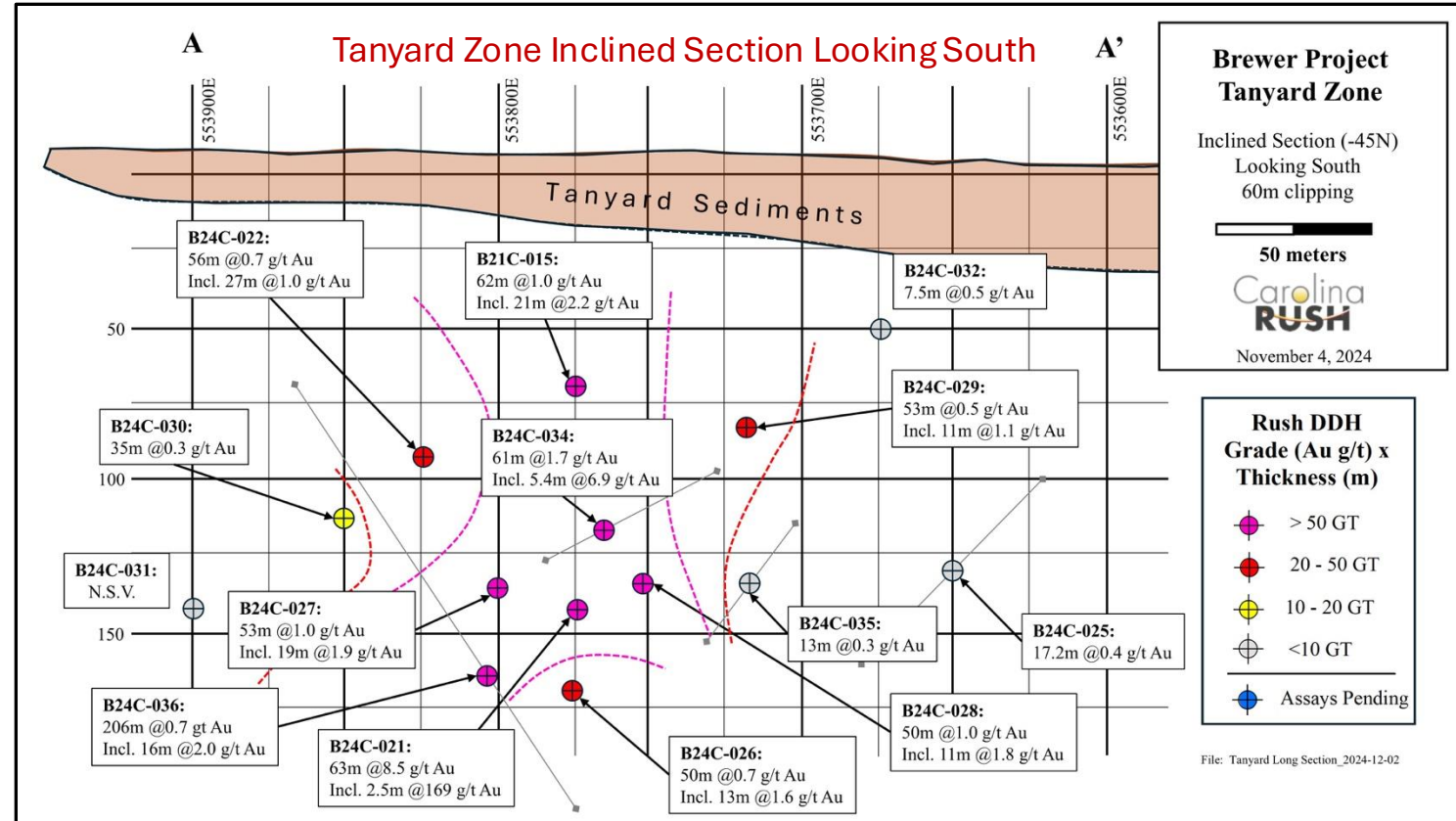




# TANYARD BRECCIA EXTENDED WITH CURRENT DRILLING

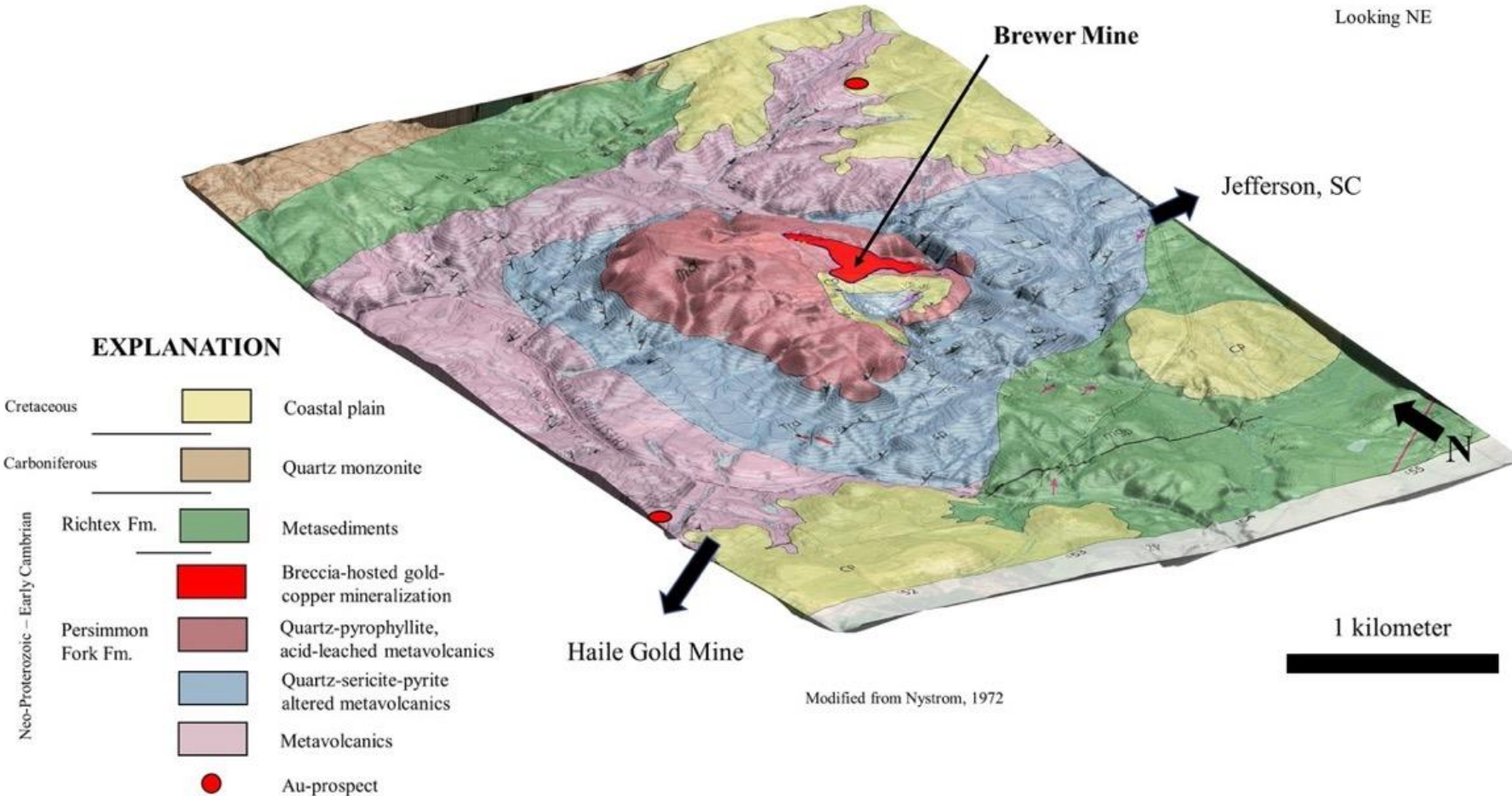
Recent Drilling Testing the Breccia Along ~ 250m of Strike from 50 – 150 m Below Surface

Drill Hole	From (m)	To (m)	Interval (m)	Au (g/t)	Cu (%)
B21C-015	44.60	107.00	62.40	1.03	0.15
Incl.	76.50	97.70	21.20	2.23	0.36
B23C-021	111.50	174.00	62.50	8.45	0.28
Incl.	132.70	149.00	16.30	2.83	1.00
And	170.50	173.00	2.50	168.72	<0.10
Incl.	170.50	171.50	1.00	372.00	<0.10
B24C-022	49.00	106.50	56.00	0.70	0.11
Incl.	53.88	80.85	26.97	1.01	0.13
B24C-026	133.00	182.92	49.92	0.73	<0.1
Incl.	136.00	149.00	13.00	1.59	0.21
B24C-027	91.00	143.50	52.50	1.00	0.14
Incl.	121.53	140.50	18.97	1.93	0.35
B24C-028	106.50	156.50	50.00	1.01	0.10
Incl.	132.00	143.20	11.20	1.80	<0.10
B24C-029	88.50	141.50	53.00	0.47	<0.10
Incl.	109.00	120.00	11.00	1.06	<0.10
B24C-034	106.20	167.20	61.00	1.65	0.28
Incl.	143.50	154.10	10.60	4.36	0.95
B24C-036	63.20	269.50	206.30	0.66	<0.1
Incl.	236.10	252.00	15.90	2.03	<0.1



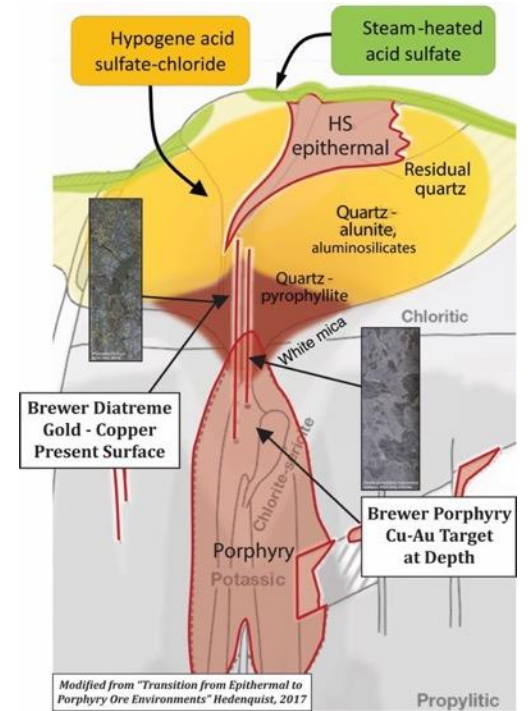
# BREWER GEOLOGY: EXPLORATION MODEL

## Diatreme Breccias and Porphyry Target

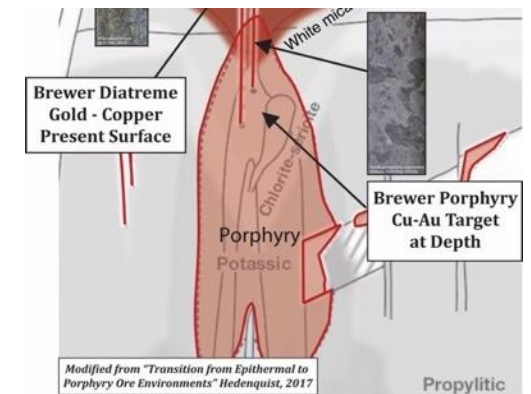


- Lithocap forms prominent topographic high
- High-Level diatreme at surface, above porphyry system at depth

## Porphyry Cu Model Cross-Section



## Brewer Level

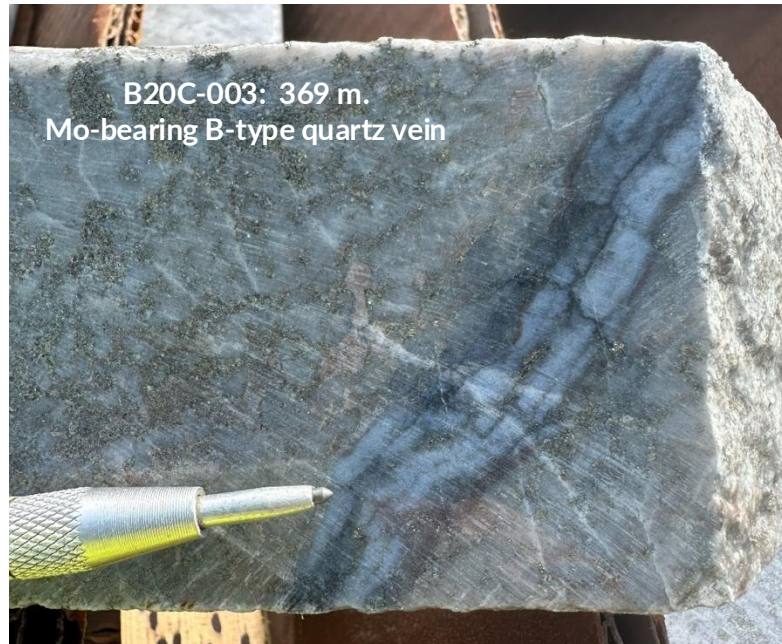




# PORPHYRY COPPER POTENTIAL

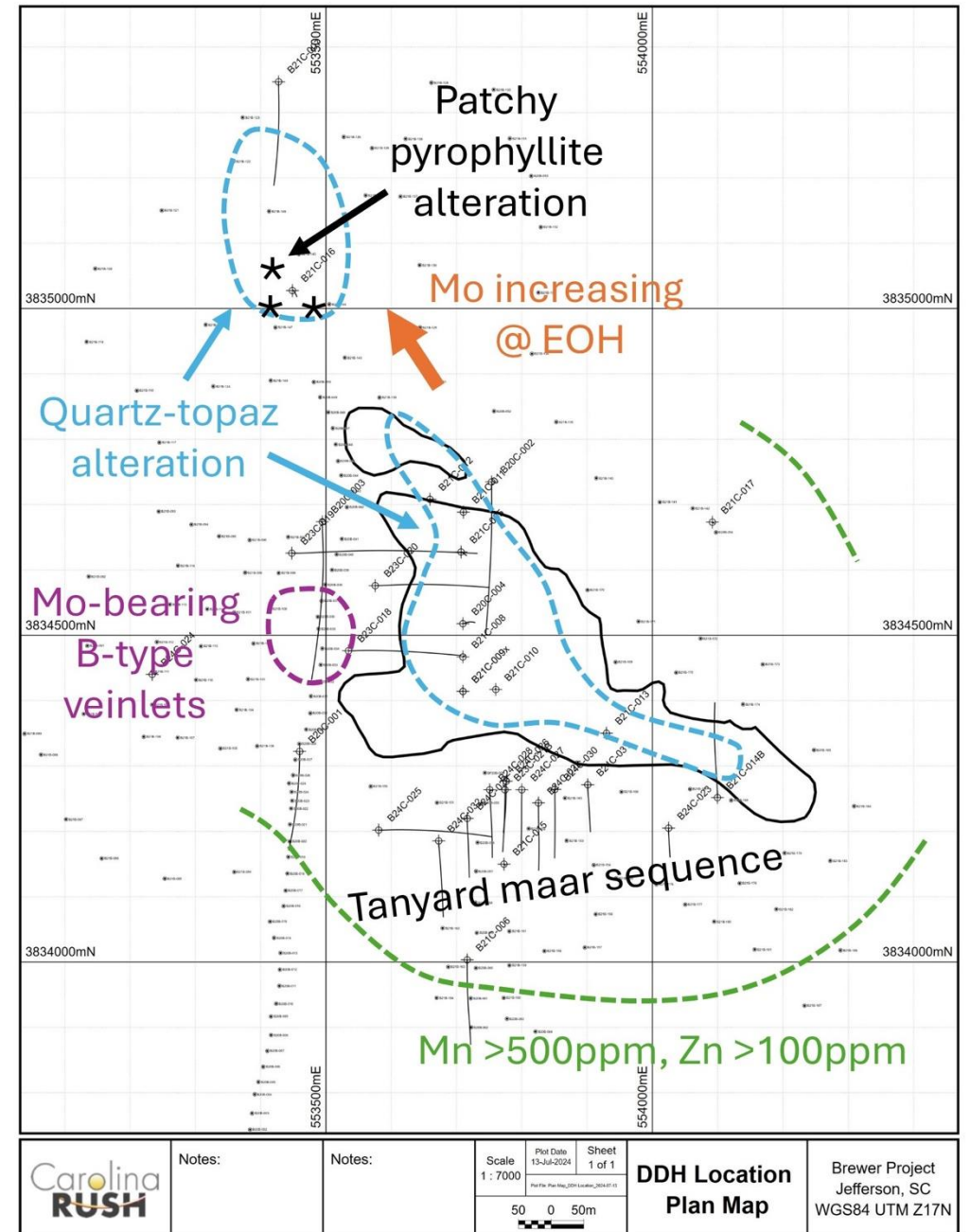
## Lithocap and High-Sulfidation Au-Cu Represents the Shallow Parts of a Porphyry System

- A review of the Brewer Project provided evidence for the existence of porphyry-type mineralization
- A series of geologic and geochemical vectors suggest that the alteration zone has been tilted since its formation and may now be inclined broadly northwestward at 30 – 50°
- To further test this interpretation, two drill holes are proposed in the northwestern part of the alteration zone before deep drilling in search of the porphyry copper center



TSXV: RUSH | OTCQB: PUCCF

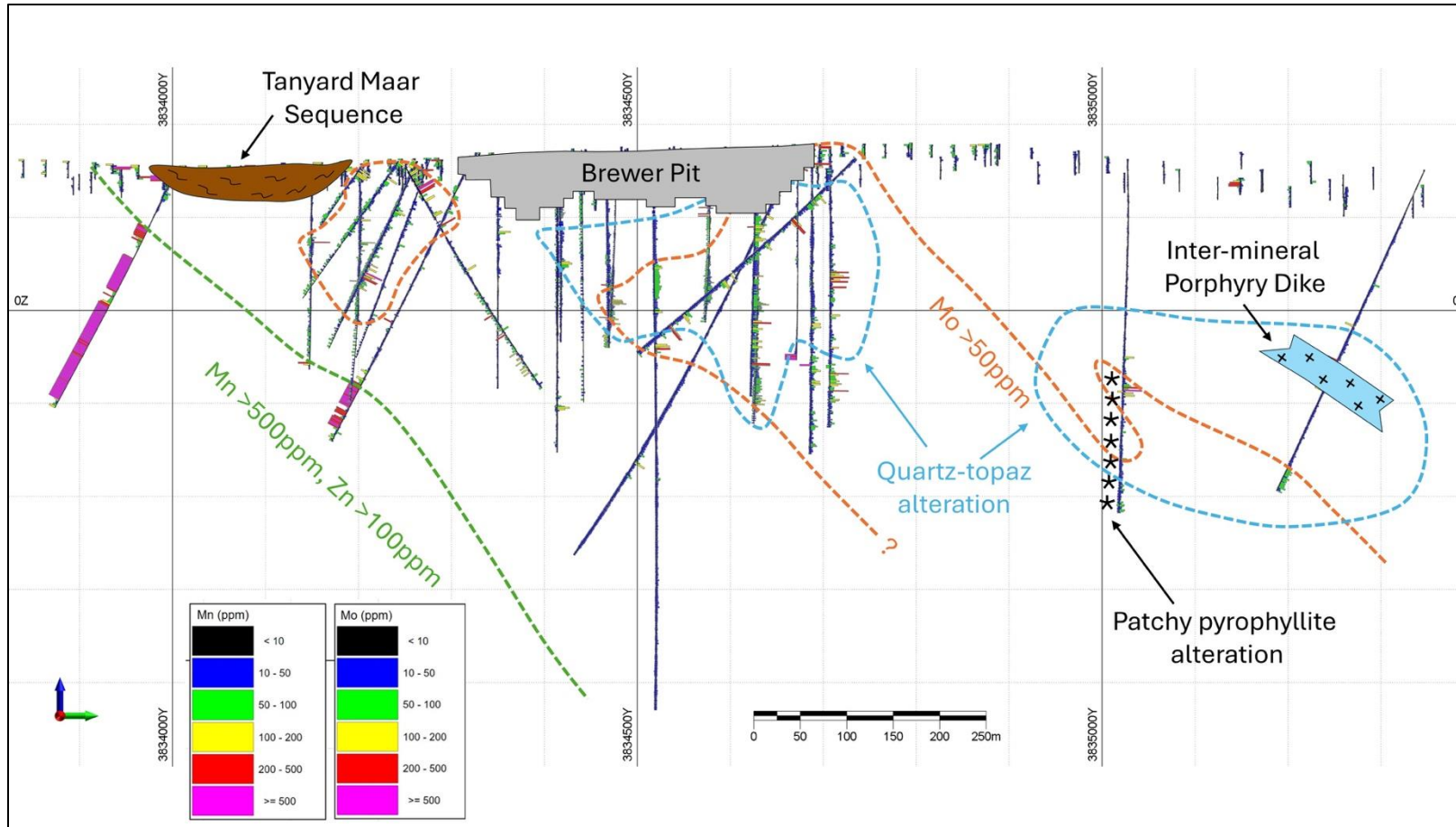
## Surface Map Showing Porphyry Copper Vectors





# PORPHYRY COPPER POTENTIAL

Indications of deep lithocap environment, approaching epithermal-porphyry transition



B21C-016: 227 m. Patchy pyrophyllite "gusano" alteration textures



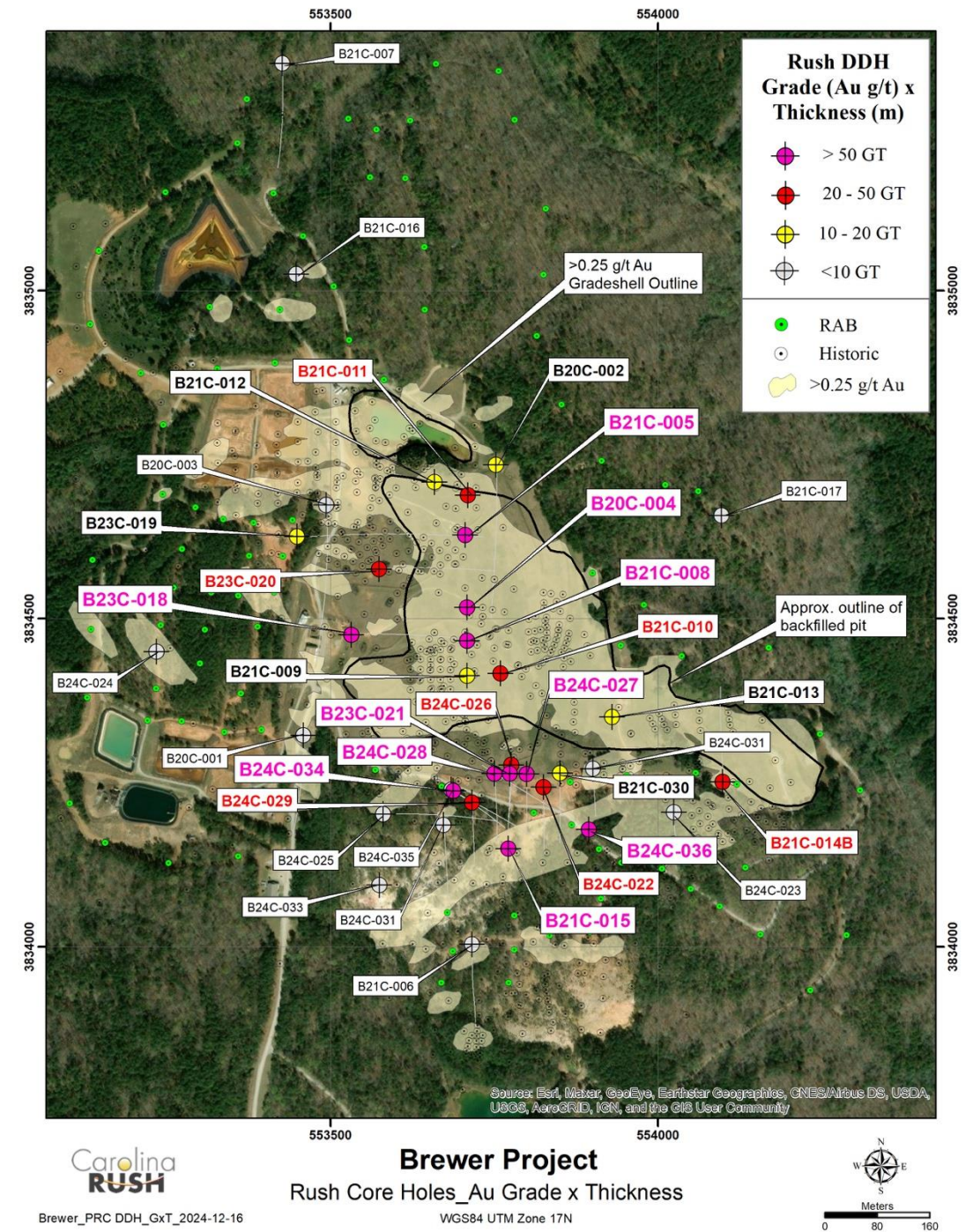
B21C-016: 223m. Chalcopyrite + Bomite



# BREWER NEXT STEPS

## Test Porphyry Copper Potential

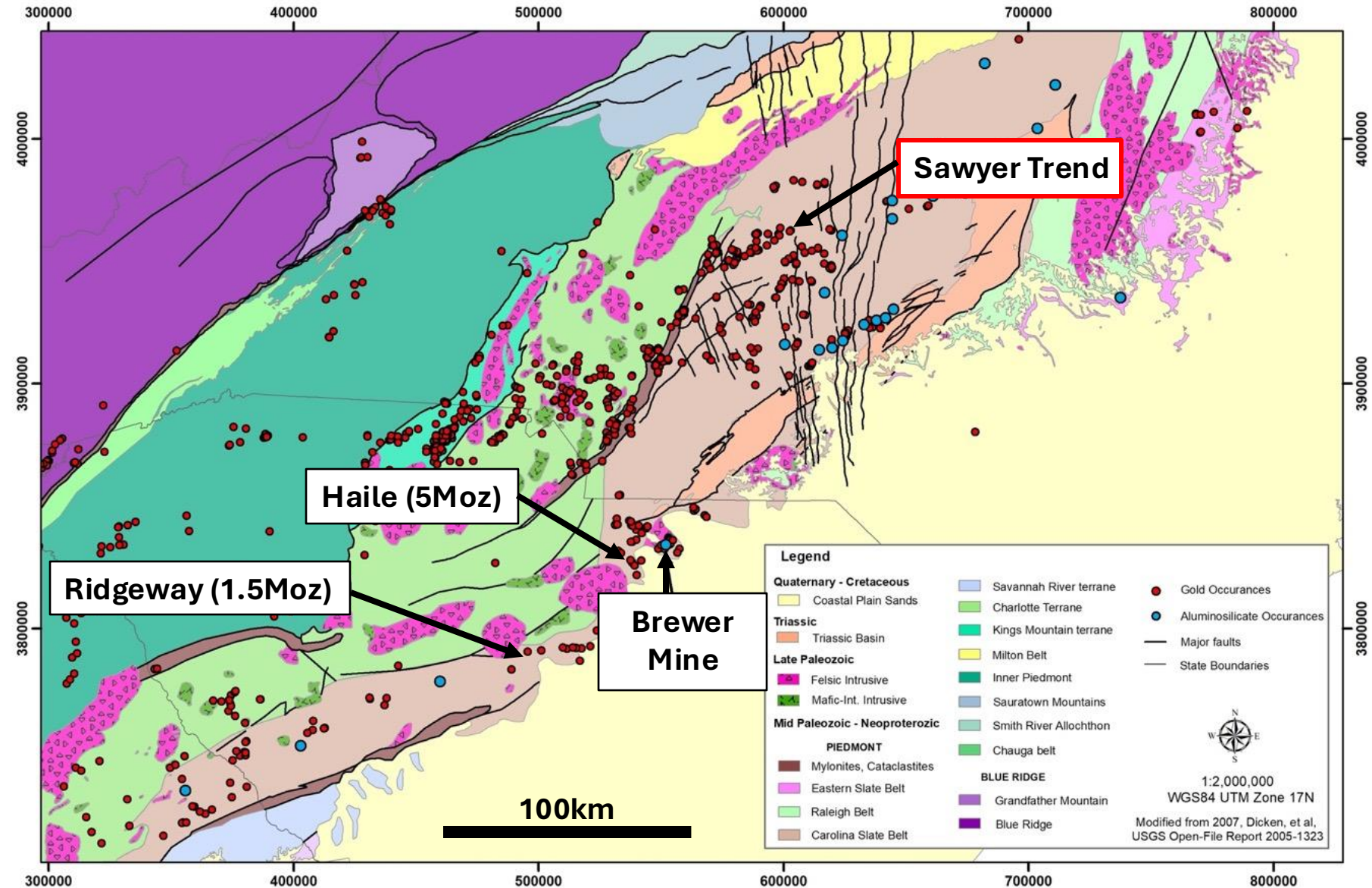
- Fully funded 3,000 m drill program completed in Q4-2024 resulted in:
  - Extended the Tanyard Breccia Zone 75 meters down dip with Zone remaining open for expansion
  - Re-entry of hole B21C-016 extended the vertical hole (16x) to approx. 650m total depth - **results pending**
- Zonge geophysical (MT) tests were performed in Q3-2024 to better understand methods best suited to map deep porphyry potential
- Results of Hole 16x and Zonge test work will inform a possible deep drilling program in 2025
- A maiden NI 43-101 Brewer Technical Report and Mineral Resource Estimate will be released in Q1-2025
- Rush will continue actively advancing discussions with potential strategic partners for a possible Brewer JV





# REGIONAL OPPORTUNITIES

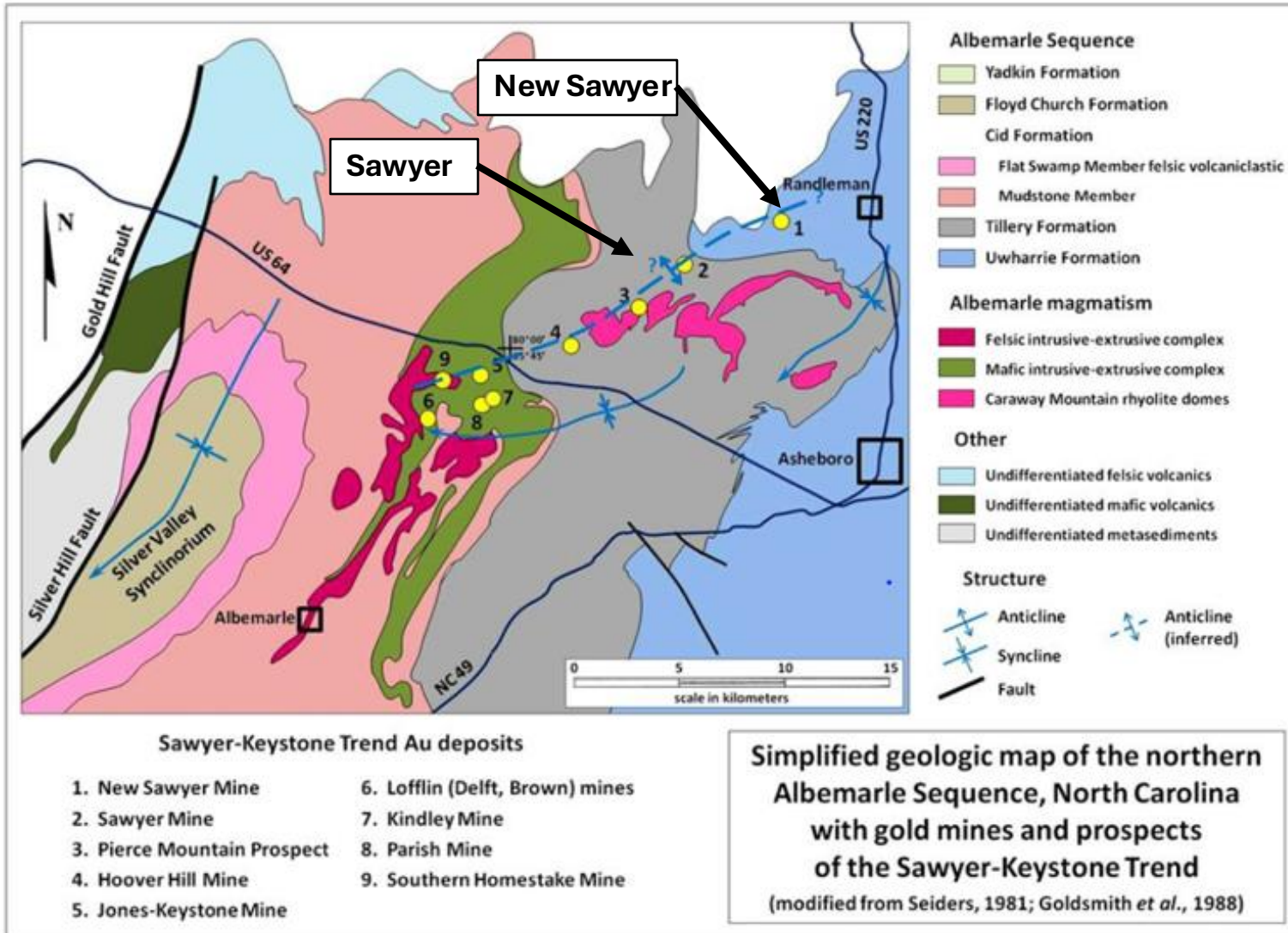
- RUSH has identified numerous prospects and areas of interest that are available for acquisition
- Acquired two former gold mines along the Sawyer Trend in North Carolina
- No significant competition in the area despite favorable geology and stable, pro-mining jurisdiction
- Limited modern exploration - significant opportunity for next major discovery





# SAWYER TREND PROPERTIES IN RANDOLPH COUNTY, NC

An Alignment of Gold Deposits Over a +20 km Long Trend



- Exploring the +20 km Long Sawyer-Keystone Gold Trend
- Recently recognized trend of Haile-type historic gold mines
- No modern exploration programs completed

Possible antiform axial to the Sawyer-Keystone Trend (modified from Seiders, 1981 and Goldsmith *et al.*, 1998). The discontinuous shear zones hosting gold mineralization may be part of a low-strain axial fault zone.



# SAWYER HISTORIC GOLD MINE

Randolph County, North Carolina

## Historic Mineral Resource Estimate (2021)\*

### at Sawyer Mine:

- M&I: 4.3 Mt @ 0.8 g/t Au containing 116,500 oz Au
- Inferred: 1.8 Mt @ 0.7 g/t Au containing 40,600 oz Au

\* Based on 0.2 g/t COG

## Mineralization

- Outcropping and near surface
- Occurs in 4 parallel zones
- Open for expansion in several areas
- Haile Mine type gold mineralization

*\* The Company cautions that a Qualified Person has not done sufficient work to classify the Historic Estimate as current mineral resources or mineral reserves under NI 43-101. The Company is not treating the Historical Estimate as current mineral resources or mineral reserves. There can be no certainty, following further evaluation and/or exploration work, that the Historic Estimate can be upgraded or verified as mineral resources or mineral reserves in accordance with NI 43-101. However, the Company plans to conduct further evaluation and/or exploration work with the objective of verifying or upgrading the Historic Estimate as mineral resources or mineral reserves in accordance with NI 43-101.*





# SAWYER

## Recent Verification Trenches of Historic Data

Trench ID	From (m)	To (m)	Interval (m)	Au (g/t)
ST23-01	0	36.0	36.0	1.9
Incl.	12.0	33.0	21.0	2.9
Incl.	18.0	30.0	12.0	3.9

Trench ID	From (m)	To (m)	Interval (m)	Au (g/t)
ST23-02	0	34.0	34.0	1.1
Incl.	0	6.0	6.0	1.8
Incl.	24.0	28.0	4.0	1.7

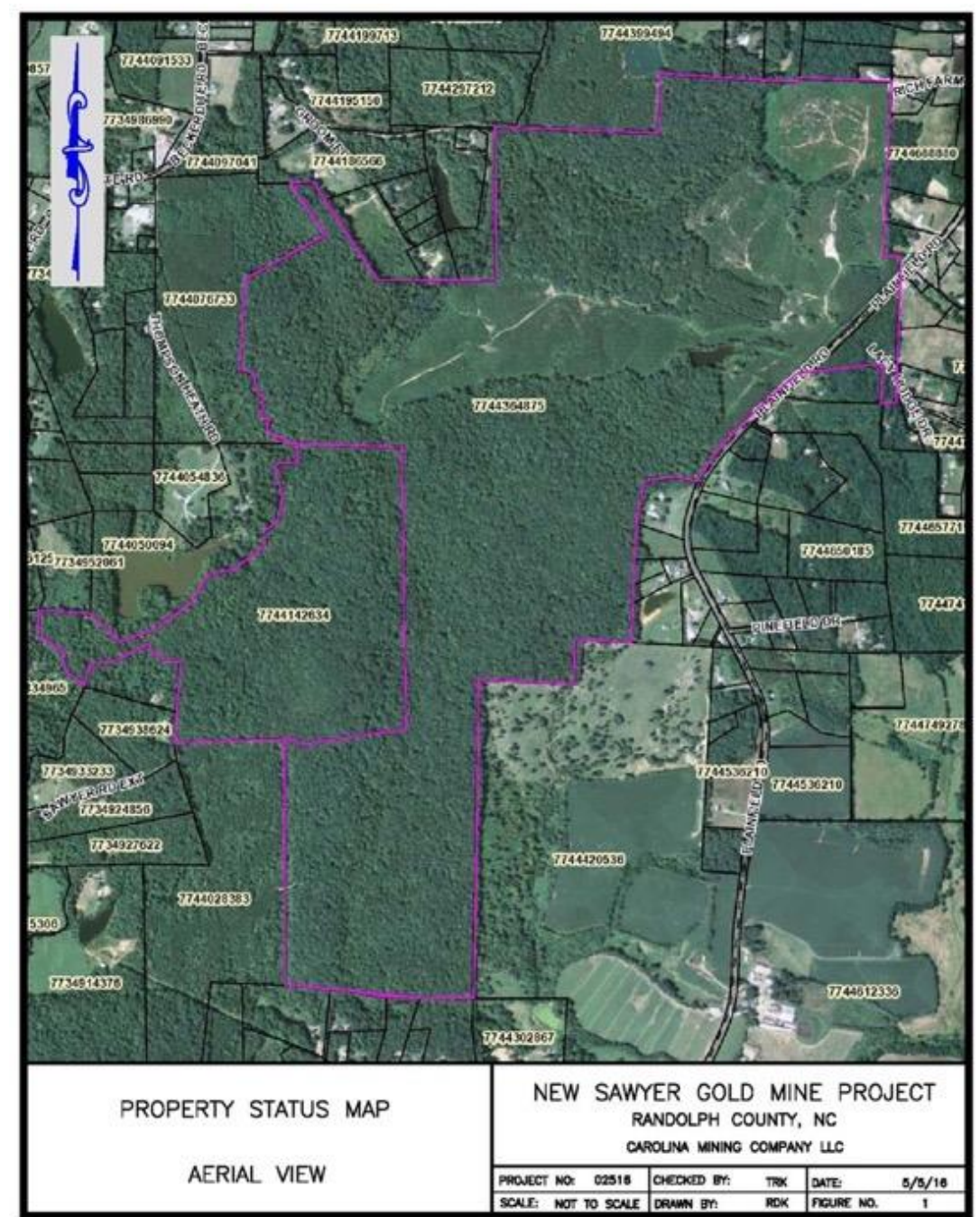




# NEW SAWYER GOLD MINE

Randolph County, North Carolina

- Gold was produced from multiple zones hosted in Haile-type sericite-pyrite-clay alteration
- Large, structurally controlled alteration zone
- 700 m x 200 m gold geochemical anomaly
- 12 vertical shafts
- The Sawyer & New Sawyer Mines have potential for:
  - Near surface oxide, bulk-mineable gold mineralization
  - Resource drilling and PEA planned to evaluate for potential OP/HL exploration target



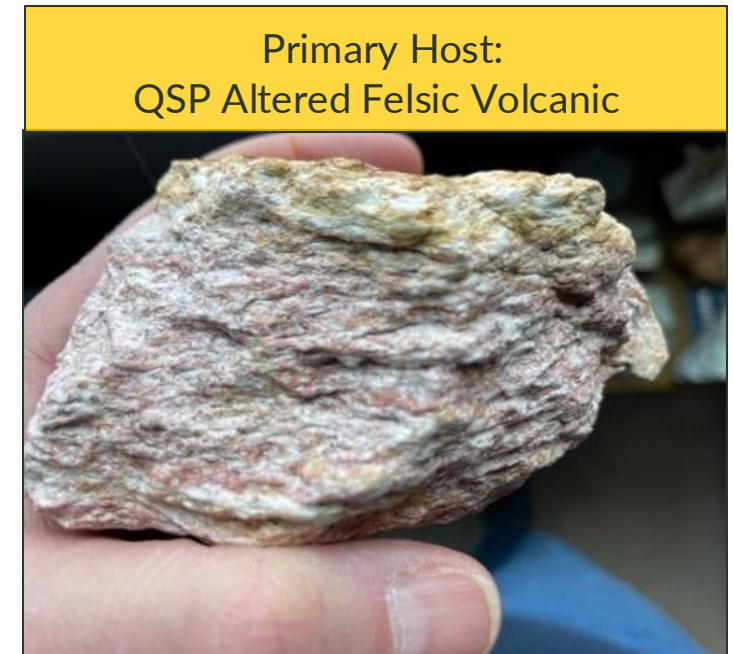


# NEW SAWYER

## Verification Trenches of Historic Data



Trench ID	From (m)	To (m)	Interval (m)	Au (g/t)
NS-01	0	30	30	1.6
Incl.	12	28	16	2.2
NS-02	0	30	30	1.0
Incl.	20	30	10	2.1



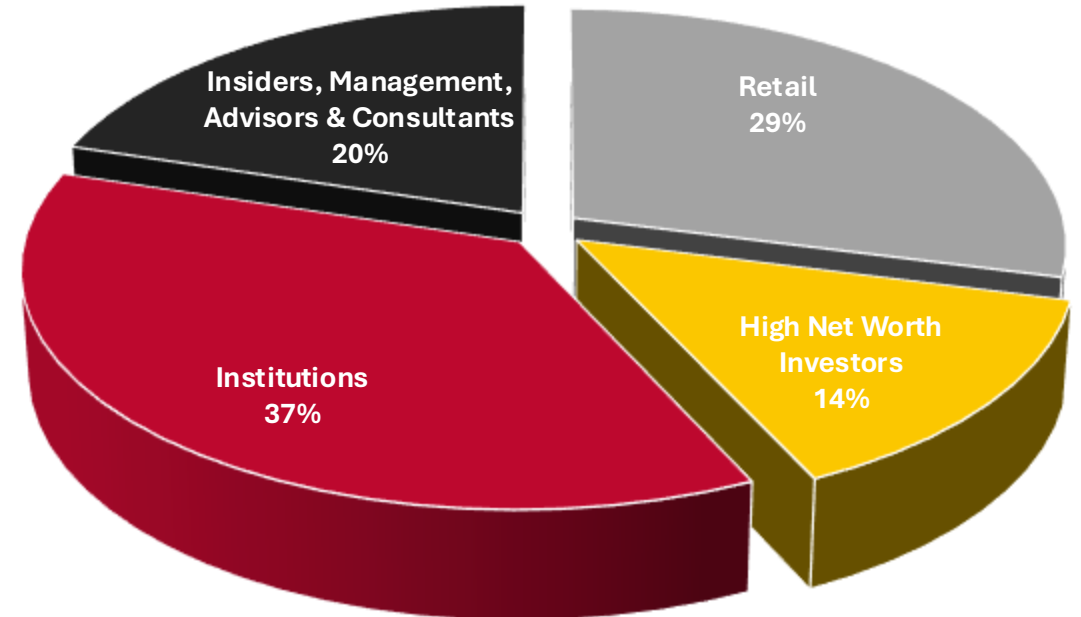


# CAPITAL STRUCTURE

TSXV: RUSH | OTCQB: PUCCF

## Capital Structure (as of December 16, 2024)

Share Price:	\$0.07
Shares Outstanding:	59,000,122
Warrants:	23,210,931
Options:	3,466,000
Fully Diluted:	85,677,053
52 Week Range:	\$0.04 - \$0.29
Market Capitalization:	\$4,130,008
Insider Ownership:	20%
Institutions:	37%
Analyst Coverage:	Don Blyth, Paradigm Capital dblyth@paradigmcap.com T: +416.903.3461





# MANAGEMENT TEAM

## Technical Experience & Seasoned Management

### LAYTON CROFT – President, CEO & Director

- Executive with +20 years of global minerals and mining industry experience including senior roles with Ivanhoe Mines, Rio Tinto, Peabody Energy and Duke Energy in Asia, Africa and North America
- Independent Chairman of Erdene Resource Development (TSX: ERD) since 2019
- BA from UNC-Chapel Hill and MA from Tufts University
- Based in North Carolina

### KEITH LASKOWSKI, MSc, QP – Senior Technical Advisor

- Mining geologist and executive with +40 years of global experience in +40 countries in the discovery, development, extraction and financing of mining projects
- 17 years as Newmont Exploration Senior Geologist and Regional Manager
- 14 years leading Junior Exploration Companies in executive roles
- Principal Mining Specialist for World Bank's International Finance Corporation (2012-15)
- VP Technical Services for Sandstorm Gold Royalties (since 2015)
- MSc Geology from Colorado School of Mines, BA University of Maine
- Based in Montana

### MARK MCMURDIE – CFO

- Executive with over 30 years of senior leadership experience in public and private companies
- Also a CFO for Sylla Gold Corp. (TSXV: SYG) and KO Gold Inc. (CSE: KOG)
- Based in Ontario

TSXV: RUSH | OTCQB: PUCCF

### PATRICK QUIGLEY, MSc, QP – Exploration Manager & Senior Geologist

- Mining geologist with +15 years of professional exploration experience working on a variety of base and precious metal deposit types at generative through advanced stages of exploration and development, including:
  - Back Forty VMS, USA (permitting, Gold Resource)
  - Rodeo low-sulphidation epithermal, Mexico (production, Golden Minerals)
  - Quevar high-sulphidation epithermal, Argentina (JV with Barrick)
- BS from University of Minnesota and MSc from Colorado School of Mines
- Based in Michigan

### JEN SPOHN – Administration & Data Manager

- Senior manager with +20 years of professional experience
- 7 years with Pancon Resources Carolinas leading project support for the Brewer and Jefferson exploration programs in South Carolina
- 6 years with Firebird Resources leading project support for the Jefferson, Buzzard and Belk exploration programs in South Carolina
- 10 years total as Environmental Scientist with KCI Technologies and Taylor Wiseman & Taylor in North Carolina
- BS from State University of New York
- Based in North Carolina

### JEANNY SO – Corporate Communications Manager

- Senior consultant and corporate affairs professional with +20 years of global experience in the minerals and mining industry
- Manages investor relations, strategic marketing, digital media and corporate communications
- Based in Ontario



# TECHNICAL EXPERIENCE & SEASONED GOVERNANCE

## Board of Directors

### **LAYTON CROFT – President, CEO & Director**

- Executive with +20 years of global minerals and mining industry experience including senior roles with Ivanhoe Mines, Rio Tinto, Peabody Energy and Duke Energy in Asia, Africa and North America
- Independent Chairman of Erdene Resource Development (TSX: ERD) since 2019
- BA from UNC-Chapel Hill and MA from Tufts University

### **DAVID PETROFF – Independent Director**

- Executive and entrepreneur with 40+ years of global experience
- He served as President, CEO and Director of Jaguar Mining from 2012-2014 and as President, CEO and Director of Breakwater Resources from 2009-2011
- From 2004-2008, David was Executive Vice President and Chief Financial Officer of Centerra Gold, a spin-off from Cameco. David was Chief Financial Officer and Senior Vice President, Finance and Administration for Cameco from 1997-2004

### **GORDON BABCOCK, P.Eng. – Independent Director**

- Mining executive and professional engineer with more than 42 years of experience
- Worked in mine management in both underground and open pit operations, project development, engineering, exploration, and mine consulting in precious, base metals and aggregate operations across the Americas
- He has been involved with new operations, asset optimizations and strategies for stakeholder engagement in Peru, Chile, Brazil, Honduras, Spain, Bolivia, Argentina, the U.S. and Canada.
- Gordon is a graduate of Queen's University and is a member of the Association of Professional Engineers Ontario.

## Strategic Advisors

### **DAVID MOSHER**

- Mining geologist and executive with 45+ years of global experience
- Former CEO of High River Gold: led multiple gold projects/mines in Canada, West Africa and Russia
- Co-founder and independent chair of Pancon
- Degree from Acadia University

### **LAWRENCE (LAURIE) CURTIS, PhD**

- Mining geologist who founded the company that discovered and developed the world class Tujuh Bukit gold-copper district in Indonesia, with many similarities to Brewer
- 50+ years of global exploration and executive leadership experience and success
- Degrees from Australian National University and University of Toronto

### **PHILIP CORRIHER**

- Philip began investing in historic gold properties in North Carolina after a career in the international crude oil trading business as VP of Risk Management for a privately owned trading firm
- Born and raised in the Piedmont region of North Carolina, and graduated from North Carolina State University as a Park Scholar and Centennial Scholar
- In 2015, Philip founded Carolina Mining Company in order to consolidate the most prospective historic gold, silver and base metals mines of North Carolina

### **KENNETH C. BROWN**

- A North Carolina native, Mr. Brown brings relevant entrepreneurial skills, business expertise and local knowledge to the Company's strategic advisory group.



# Carolina **RUSH**

TSXV: RUSH | OTCQB: PUCCF

## FOR MORE INFORMATION:

**Patrick Quigley, Senior Exploration Manager**  
[pquigley@thecarolinarush.com](mailto:pquigley@thecarolinarush.com)

**Jeanny So, Corporate Communications Manager**  
[info@thecarolinarush.com](mailto:info@thecarolinarush.com)

